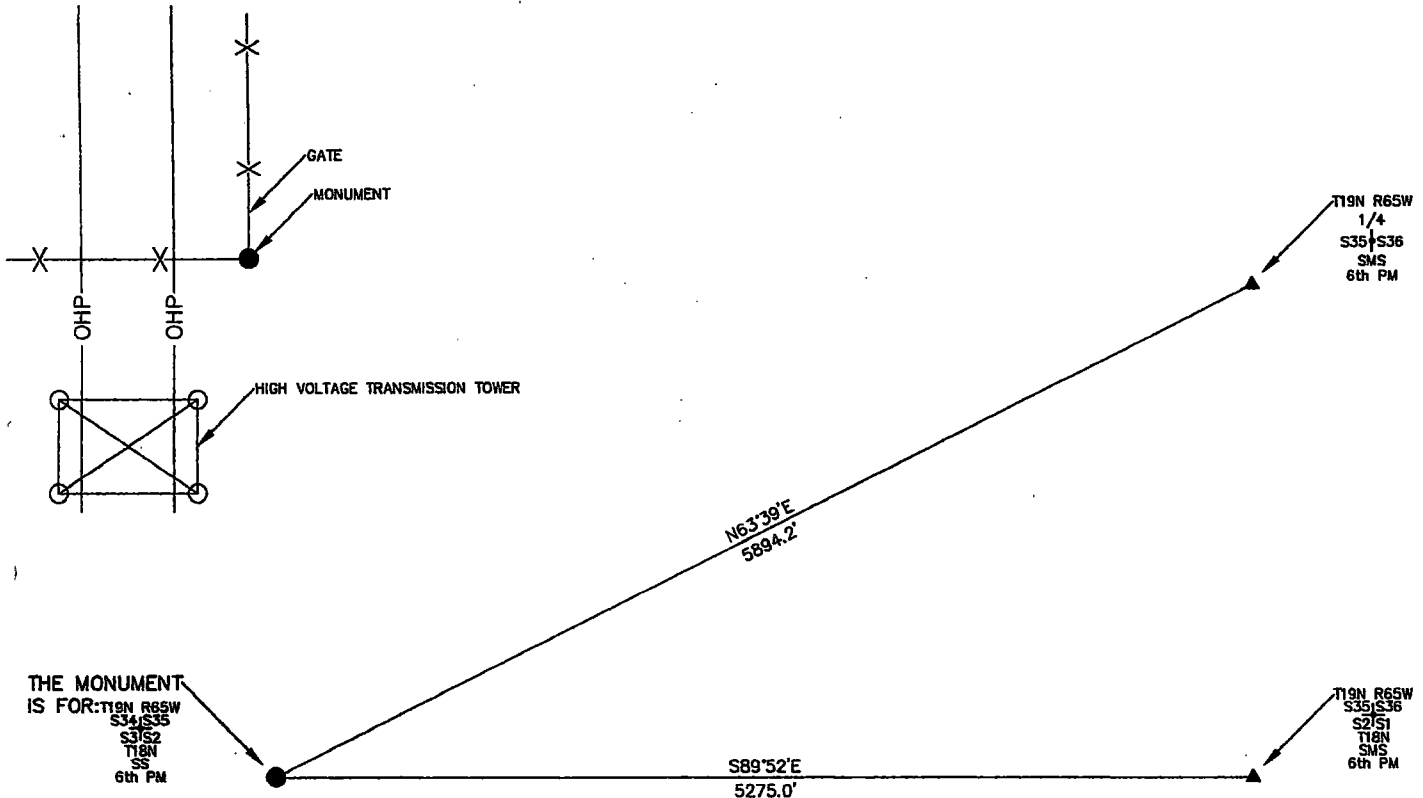


State of Wyoming Corner Record

(in compliance with the CORNER PERPETUATION AND FILING ACT, Wyoming Statutes, 2013 Section 33-29-901 through 33-29-910, and the Rules and Regulations of the Board of Professional Engineers and Professional Land Surveyors)

Reverse side of this form may be used if more space is needed.

Record of original survey and citation of source of historic information (if corner is lost or obliterated). Description of corner monumentation evidence found and/or monument and accessories established to perpetuate the location of this corner. Sketch of relative location of monument, accessories, and reference points with course and distance to adjacent corner(s) (if determined in this survey). Method and rationale for reestablishment of lost or obliterated corner.



NOTE:
LINES SHOWN ARE BETWEEN MONUMENTS AND MAY OR MAY NOT BE SECTION OR SECTION SUBDIVISION LINES.

FOUND THE MONUMENT FOR THIS CORNER COMMON TO 4 SECTIONS WHICH IS A SET STONE MEASURING 10" NORTH AND SOUTH X 8" EAST AND WEST X 11" TALL IN A NORTH AND WEST RUNNING FENCE CORNER WITH A HIGH VOLTAGE TRANSMISSION TOWER 75'± SOUTHWESTERLY OF THE MONUMENT.

THE MONUMENT FOR THIS CORNER COMMON TO 4 SECTIONS WHICH IS A SET STONE MEASURING 10" NORTH AND SOUTH X 8" EAST AND WEST X 11" TALL IN A NORTH AND WEST RUNNING FENCE CORNER WITH A HIGH VOLTAGE TRANSMISSION TOWER 75'± SOUTHWESTERLY OF THE MONUMENT.

CORNER MONUMENT SYMBOLS

- RECORD IS FOR THIS CORNER MONUMENT.
- ▲ A RELATED CORNER OR WC MONUMENT.

SCALE 1"=1000'
(EXCEPT IN TRIVIAL CASES)
BEARINGS ARE RELATED TO WCS 84 WITH GPS OBSERVATIONS
DRAWN BY: D.C.
12/17/19
P.C. M. PIERCE

Marking on the Stone

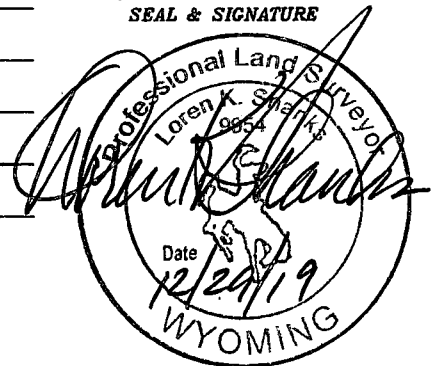
Date of Field Work: 11/19/19 Office Reference: _____

Firm/Agency, Address

UELS, LLC
3313 35TH Avenue
Suite B
Evans, Co 80620
Telephone Number: 970-506-1544

This corner record was prepared by me or under my direction and supervision.

SEAL & SIGNATURE



CROSS INDEX DIAGRAM

1	2	3	4	5	6	7	8	9	10	11	12	13	14	15	16	17	18	19	20	21	22	23	24	25	
A																									
B																									
C	6					5																			
D																									
E																									
F																									
G	7					8																			
H																									
J																									
K																									
L	18					17																			
M																									
N																									
O																									
P	19					20																			
Q																									
R																									
S																									
T	30					29																			
U																									
V																									
W																									
X	31					32																			
Y																									
Z																									

RECP #: 772855
RECORDED 3/2/2020 AT 4:16 PM BK# 2661 PG# 2007
Debra K. Lee, CLERK OF LARAMIE COUNTY, WY PAGE 1 OF 1

GOSHEN
& LARAMIE